

Versatile concrete pump; 5 section, multi-Z-boom that can unfold at 19 feet, 5 inch line, 170 cubic meters per hour.



**PUMP SPECIFICATIONS**

|                                  |  |
|----------------------------------|--|
| Maximum output (fully variable)  | 224 yd <sup>3</sup> /hr (170 m <sup>3</sup> /hr) |
| Concrete cylinder (hard chromed) | 9" x 83" (230 mm x 2100 mm)                      |
| Strokes per minute               | 30   |
| Concrete pressure (rod side)     | 1043 PSI (72 Bar)                                |
| Concrete pressure (head side)    | 1600 PSI (114 Bar)                               |
| Hopper capacity                  | 21 ft <sup>3</sup> (600 liters)                  |
| S-Tube                           | 9" x 7" (230 mm x 180 mm)                        |
| Hydraulic pump                   | Rexroth A11VL0260                                |
| Cycling system                   | All hydraulic sensing w/ manual overrides        |
| Max. aggregate size              | 2 1/2" (65 mm)                                   |

**BOOM SPECIFICATIONS**

|                                     |                            |
|-------------------------------------|----------------------------|
| 5 section Z fold boom (vert. reach) | 105' (32 m)                |
| Maximum horizontal reach            | 92' 10" (28.3 m)           |
| Reach from front of truck           | 85' (25.9 m)               |
| Unfolding height                    | 19' (5.8 m)                |
| Rotation                            | 370 degree                 |
| Section articulation                | 94 / 180 / 240 / 240 / 240 |
| Proportional Boom                   | Yes                        |
| Delivery line                       | 5" (125 mm)                |
| 1st Section                         | 25' 3" (7.7 m)             |
| 2nd Section                         | 16' 9" (5.1 m)             |
| 3rd Section                         | 16' 5" (5.0 m)             |
| 4th Section                         | 16' 5" (5.0 m)             |
| 5th Section                         | 16' 1" (4.9 m)             |

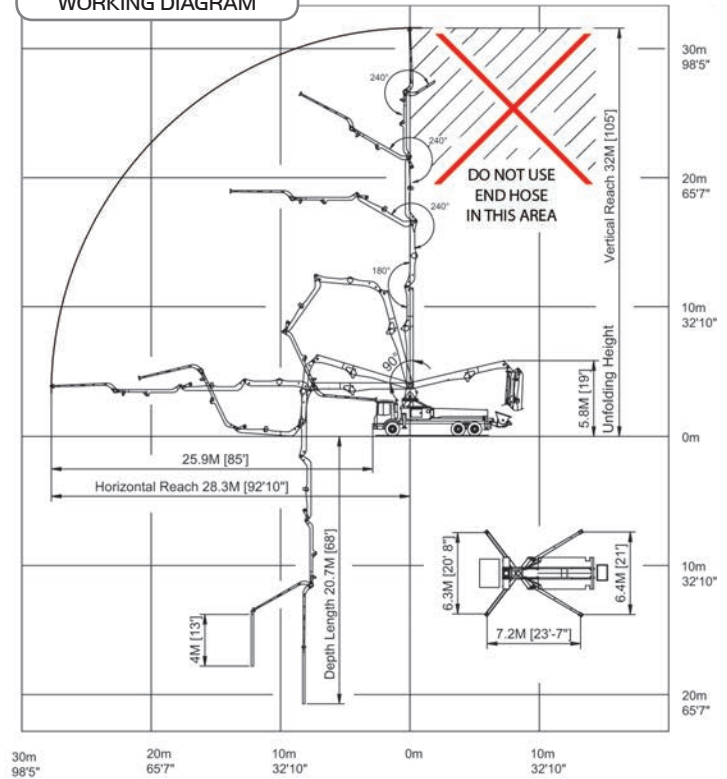
**OUTRIGGER SPECIFICATIONS**

|                      |                        |
|----------------------|------------------------|
| All hydraulic        | Yes                    |
| Front spread         | 20' 8" (6.3 m)         |
| Rear spread          | 21' (6.4 m)            |
| Max Outrigger weight | 20,500 Kg (45,195 Lbs) |

**STANDARD ACCESSORIES**

|  |   |
|--|---|
| Heat pipe and elbows                     | One safety sling                                  |
| Wireless proportional remote control HBC | Tool box with basic repair items and testing gage |
| One wire remote control                  | Spare hydraulic hose kit                          |
| Boom light kit                           | Spare sensing valves                              |
| Working lamps on the side panels         | Spare pumping relay and fuses                     |
| Magnetic working lamp                    | Two clamps (125 mm)                               |
| Blow-out system cap (water)              | Outrigger pads 4 pieces                           |
| Hopper vibrator                          | Grundfos water pump                               |
| Automatic greasing system (hopper only)  | One Water hose plus nozzle                        |
| End hose length 4m (13")                 | Two clean up sponges                              |
|  | Clean-up scraper                                  |
|  | Two manual books                                  |

**WORKING DIAGRAM**



**WEIGHT DIAGRAMS**

