

Outstanding workhorse in areas with overhead obstacles; 4 sections Z-fold, 5 inch line, 170 cubic meters per hour.



**PUMP SPECIFICATIONS**

Maximum output (fully variable)	224 yd <sup>3</sup> /hr (170 m <sup>3</sup> /hr)
Concrete cylinder (hard chromed)	9" x 83" (230 mm x 2100 mm)
Strokes per minute	30
Concrete pressure (rod side)	1043 PSI (72 Bar)
Concrete pressure (head side)	1600 PSI (114 Bar)
Hopper capacity	21 ft <sup>3</sup> (600 liters)
S-Tube	9" x 7" (230 mm x 180 mm)
Hydraulic pump	Rexroth A11VLO260
Cycling system	All hydraulic sensing w/ manual overrides
Max. aggregate size	2 1/2" (65 mm)

**BOOM SPECIFICATIONS**

4 section Z fold boom (vert. reach)	124' 7" (38 m)
Maximum horizontal reach	111' 8" (34 m)
Reach from front of truck	103' 8" (31.6 m)
Unfolding height	28' 7" (8.7 m)
Rotation	370 degree
Section articulation	95 / 187 / 240 / 245
Proportional Boom	Yes
Delivery line	5" (125 mm)
1st Section	30' 2" (9.2 m)
2nd Section	26' 11" (8.2 m)
3rd Section	27' 3" (8.3 m)
4th Section	27' 8" (8.4 m)

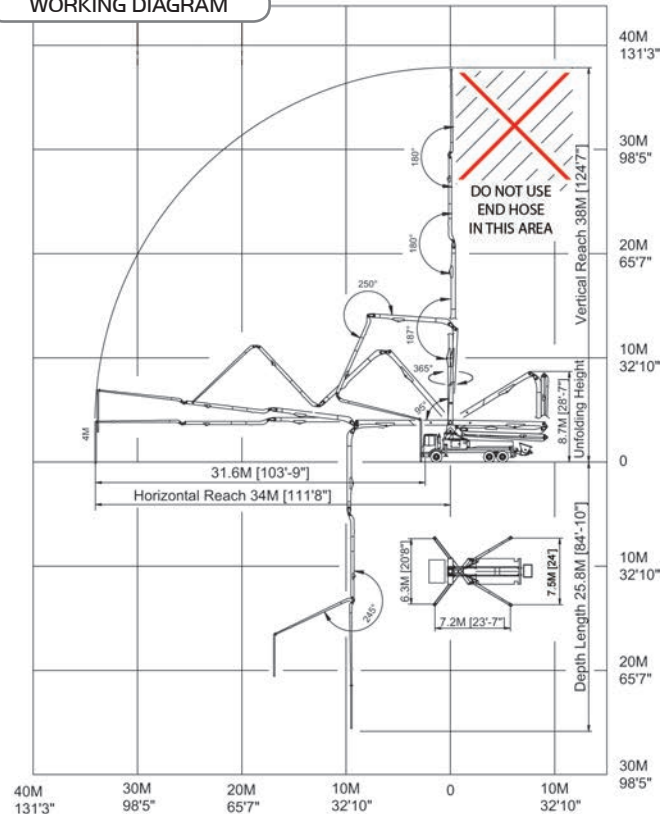
**OUTRIGGER SPECIFICATIONS**

All hydraulic	Yes
Front spread	20' 8" (6.3 m)
Rear spread	24' (7.5 m)
Max Outrigger weight	21,800 Kg (48,060 Lbs)

**STANDARD ACCESSORIES**

Heat pipe and elbows	One safety sling
Wireless proportional remote control HBC	Tool box with basic repair items and testing gage
One wire remote control	Spare hydraulic hose kit
Boom light kit	Spare sensing valves
Working lamps on the side panels	Spare pumping relay and fuses
Magnetic working lamp	Two clamps (125 mm)
Blow-out system cap (water)	Outrigger pads 4 pieces
Hopper vibrator	Grundfos water pump
Automatic greasing system (hopper only)	One Water hose plus nozzle
End hose length 4m (13")	Two clean up sponges
	Clean-up scraper
	Two manual books

**WORKING DIAGRAM**



**WEIGHT DIAGRAMS**

