

Great for maneuvering in and out of tight job sites with convenience of x-style outriggers; 5 sections Z-R fold boom, 5 inch line, 170 cubic meters per hour.



PUMP SPECIFICATIONS

Maximum output	224 yd ³ /hr (170 m ³ /hr)
Concrete cylinder (hard chromed)	9" x 83" (230 mm x 2100 mm)
Strokes per minute	30
Concrete pressure (rod side)	1269 PSI (87.5 Bar)
Concrete pressure (head side)	1885 PSI (130 Bar)
Hopper capacity	21 ft ³ (600 liters)
S-Tube	9" x 7" (230 mm x 180 mm)
Hydraulic pump	Rexroth A11VL0260
Cycling system	All hydraulic sensing w/ manual overrides
Max. aggregate size	2 1/2" (65 mm)

BOOM SPECIFICATIONS

5 section roll & fold (vert. reach)	145' 5" (44.3 m)
Maximum horizontal reach	132' 11" (40.5 m)
Reach from front of truck	123' (34.6 m)
Unfolding height	28' (8.6 m)
Rotation	370 degree
Section articulation	92 / 181 / 225 / 180 / 245
Proportional Boom	Yes
Delivery line	5" (125 mm)
1st Section	29' 6" (9 m)
2nd Section	23' 7" (7.2 m)
3rd Section	25' 7" (7.8 m)
4th Section	26' 11" (8.2 m)
5th Section	27' 3" (8.3 m)

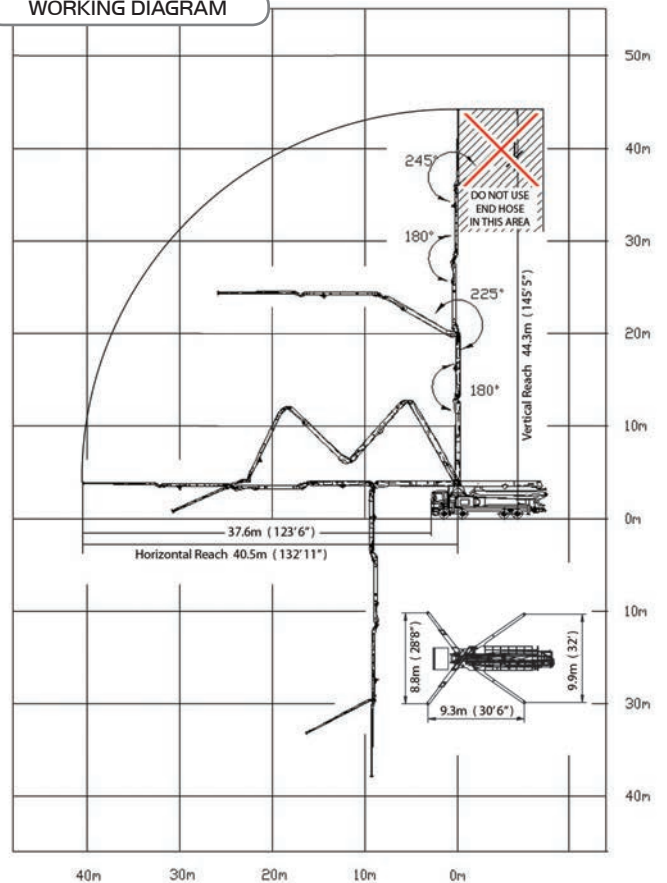
OUTRIGGER SPECIFICATIONS

All hydraulic	Yes
Front spread	28' 8" (8.8 m)
Rear spread	32' (9.9 m)
Max Outrigger weight	28,000 Kg (61,810 Lbs)

STANDARD ACCESSORIES

Dual wall pipe and elbows	One safety sling
Wireless proportional remote control HBC	Tool box with basic repair items and testing gage
One wire remote control	Spare hydraulic hose kit
Boom light kit	Spare sensing valves
Working lamps on the side panels	Spare pumping relay and fuses
Magnetic working lamp	Two clamps (125 mm)
Blow-out system cap (water)	Outrigger pads 4 pieces
Hopper vibrator	Grundfos water pump
Automatic greasing system (hopper only)	One Water hose plus nozzle
End hose length 4m (13')	Two clean up sponges
	Clean-up scraper
	Two manual books

WORKING DIAGRAM



WEIGHT DIAGRAM

