

Outstanding work-horse; 5 sections Z-R fold, 180 cubic meters per hour and only the "62-meter" with standard 5" delivery line.



PUMP SPECIFICATIONS

Maximum output	237 yd ³ /hr (180 m ³ /hr)
Delivery cylinder (hard chromed)	9" x 83" (230 mm x 2100 mm)
Strokes per minute	30
Concrete pressure (rod side)	1269 PSI (87.5 Bar)
Concrete pressure (head side)	1885 PSI (130 Bar)
Hopper capacity	21 ft ³ (600 litres)
S-tube	9" x 7" (230 mm x 180 mm)
Hydraulic pump	Rexroth A20VLO190
Cycling system	All hydraulic sensing w/ manual overrides
Max. aggregate size	2 1/2" (65 mm)

BOOM SPECIFICATIONS

5 section Z fold boom (vert. reach)	201' 7" (61.5 m)
Maximum horizontal reach	187' (57 m)
Reach from front of truck	177' 11" (54 m)
Unfolding height	38' 9" (11.8 m)
Rotation	370 degree
Section articulation	92 / 180 / 230 / 180 / 245
Proportional Boom	Yes
Delivery line	5" (125 mm)
1st Section	40' (12.2 m)
2nd Section	34' 1" (10.4 m)
3rd Section	36' (11 m)
4th Section	39' (11.9 m)
5th Section	40' 3" (12.3 m)

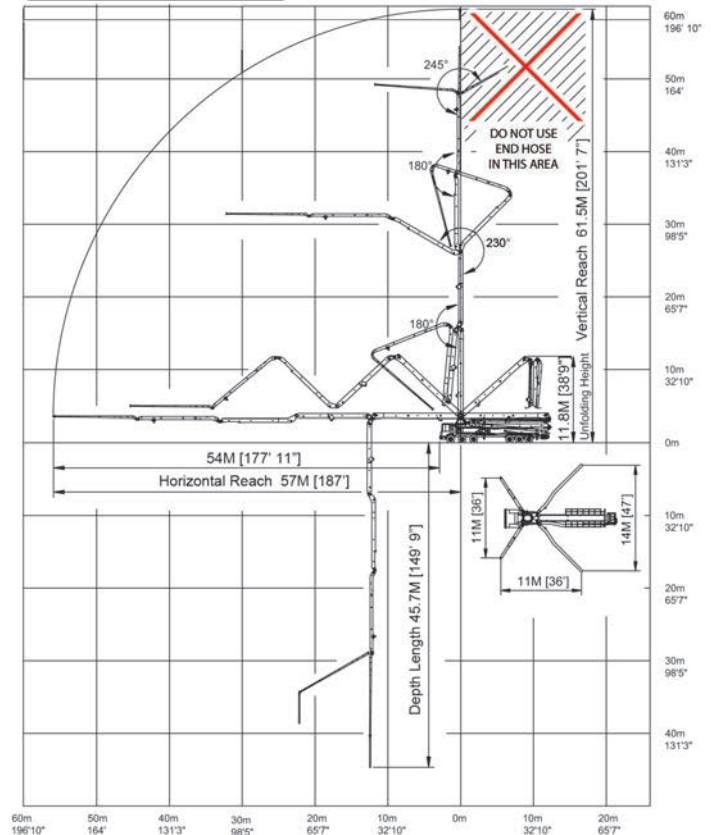
OUTRIGGER SPECIFICATIONS

All hydraulic	Yes
Front spread	36' (11 m)
Rear spread	47' (14 m)
Max Outrigger weight	46,500 Kg (102,514 Lbs)

STANDARD ACCESSORIES

Dual wall pipe and elbows	One safety sling
Wireless proportional remote control HBC	Tool box with basic repair items and testing gage
One wire remote control	Spare hydraulic hose kit
Boom light kit	Spare sensing valves
Working lamps on the side panels	Spare pumping relay and fuses
Magnetic working lamp	Two clamps (125 mm)
Blow-out system cap (water)	Outrigger pads 4 pieces
Hopper vibrator	Grundfos water pump
Automatic greasing system	One Water hose plus nozzle
(hopper only)	Two clean up sponges
End hose length 4m (13')	Clean-up scraper
	Two manual books

WORKING DIAGRAM



WEIGHT DIAGRAM

