

*Ideal for big jobs; 5 sections
 Z-R fold, 5 inch line, 180 cubic
 meters per hour.*



PUMP SPECIFICATIONS

Maximum output	237 yd ³ /hr (180 m ³ /hr)
Delivery cylinder (hard chromed)	9" x 83" (230 mm x 2100 mm)
Strokes per minute	30
Concrete pressure (rod side)	1269 PSI (87.5 Bar)
Concrete pressure (head side)	1885 PSI (130 Bar)
Hopper capacity	21 ft ³ (600 litres)
S-tube	9" x 7" (230 mm x 180 mm)
Hydraulic pump	Rexroth A20VLO190
Cycling system	All hydraulic sensing w/ manual overrides
Max. aggregate size	2 1/2" (65 mm)

BOOM SPECIFICATIONS

5 section Z fold boom (vert. reach)	213' (65 m)
Maximum horizontal reach	199' (60.6 m)
Reach from front of truck	189' (57.6 m)
Unfolding height	47' 6" (14.5 m)
Rotation	370 degree
Section articulation	92 / 180 / 230 / 180 / 235
Proportional Boom	Yes
Delivery line	5" (125 mm)
1st Section	40' (12.2 m)
2nd Section	33' 9" (10.3 m)
3rd Section	37' (11.3 m)
4th Section	43' 7" (13.3 m)
5th Section	43' 3" (13.2 m)

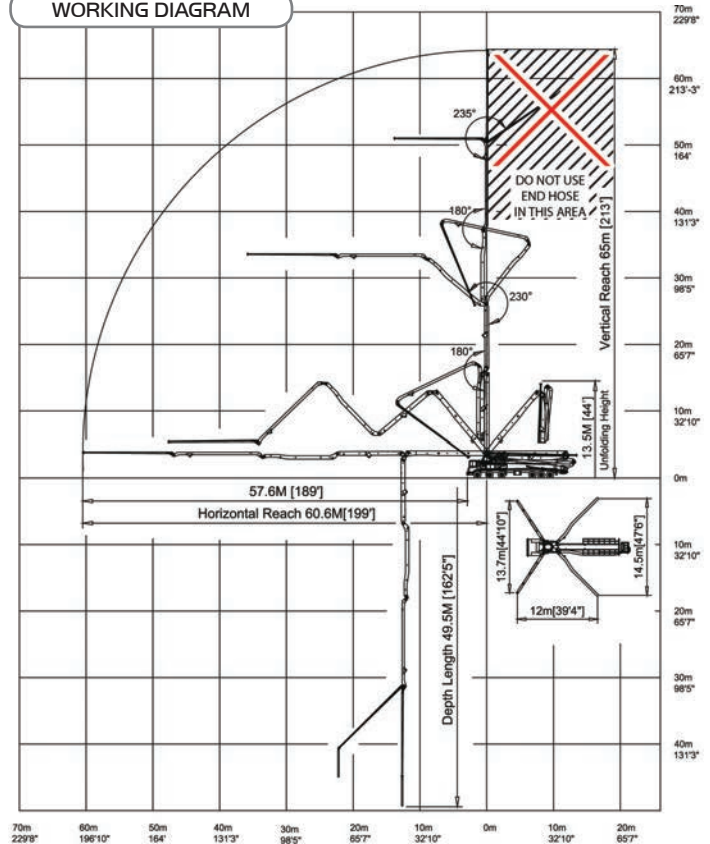
OUTRIGGER SPECIFICATIONS

All hydraulic	Yes
Front spread	44' 10" (13.7 m)
Rear spread	47' 6" (14.5 m)
Max Outrigger weight	54,000 Kg (119,049 Lbs)

STANDARD ACCESSORIES

Dual wall pipe and elbows	One safety sling
Wireless proportional remote control HBC	Tool box with basic repair items and testing gage
One wire remote control	Spare hydraulic hose kit
Boom light kit	Spare sensing valves
Working lamps on the side panels	Spare pumping relay and fuses
Magnetic working lamp	Two clamps (125 mm)
Blow-out system cap (water)	Outrigger pads 4 pieces
Hopper vibrator	Grundfos water pump
Automatic greasing system (hopper only)	One Water hose plus nozzle
End hose length 4m (13')	Two clean up sponges
	Clean-up scraper
	Two manual books

WORKING DIAGRAM



WEIGHT DIAGRAM

